



What's New in Mirage 3?

Thank you for your interest in our new Mirage Version, featuring all the latest improvements. The following provides a brief introduction to the new functions and improvements in comparison to Mirage 2.0.

Important note: If you purchased your current Mirage Version after December 15, 2013, updating to this Mirage Version is free of charge. For more information, visit our website: www.dinax.com/updates

1. Support for the Canon iPF printer
2. Support for Adobe® CC, Adobe® CC 2014
3. Add files retrospectively
4. Mirage does not automatically close
5. Simultaneous work from different Adobe applications
6. Improved overview of the document list
7. New color management functions
8. Insert (overlay) logo
9. Additional menu item "Print Job Management"
10. Add-on: Mirage Job Archive
11. PROOF-Extension: personalized logo in media wedge
12. Mirage Production Edition: new menu item "Ink Density Adjustment"
13. Summary

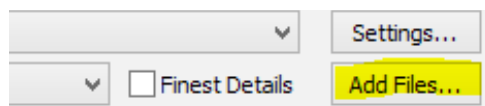
1) Support for the Canon iPF Printer

The newest Mirage Version now offers support for current 5, 6, 8 & 12 color iPF printers from Canon. Both Mirage Versions "**Mirage Master Edition Canon**" and "**Mirage Canon Edition** iPF 8&12 Color" are available for order immediately. If you are already using a Canon printer in addition to an Epson printer, you can order updates for a reasonable price. Just look on our website or contact your retailer.

2) Support for Adobe® CC, Adobe® CC 2014

Mirage 3.0 now supports Adobe® Photoshop® CC, InDesign® CC, and Illustrator® CC, Photoshop® CC 2014, InDesign® CC 2014, and Illustrator® CC 2014.

3) Add Files Retrospectively



Mirage provides the option of adding JPEG, TIFF, or PDF files without having to close the print dialog first. Click the "**Add Files**" button or simply drag and drop the files into the Mirage preview area.

It does not matter whether Mirage was started as a plug-in from an Adobe application or the Mirage Stand-Alone version is used. This new function can be used to make optimal use of "empty" space, for example, and save paper in the process.

4) Mirage Does Not Automatically Close

The print dialog no longer closes automatically after a print job has been carried out. This new function makes it possible to print the job again with the same or changed settings.

5) Simultaneous Work from Different Adobe® Applications

Printing with Mirage just got much easier! Mirage 3.0 makes it possible to transfer files from different Adobe® programs, such as InDesign®, Illustrator®, or Photoshop®, to a Mirage print job one after the other.

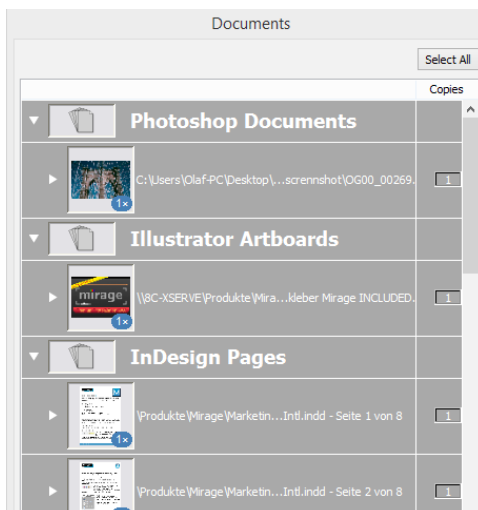
As already mentioned in point 3, you can also add additional files. This is ideal for making optimal use of the media type.



All plug-ins and the “Mirage Stand-Alone” application now form one strong unit, where all images/documents come together.

Active connections to the Mirage plug-ins in Adobe® programs can be closed at any time by clicking the connection symbol in question (bottom left of the Mirage main window). For example, clicking the Photoshop® symbol easily removes all images from Mirage which were opened by the Photoshop® plug-in in Mirage.

6) Improved Overview of the Document List

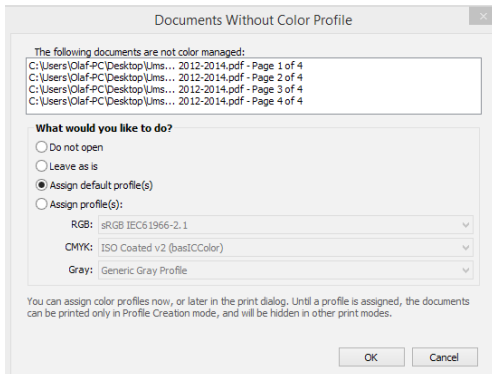


The overview function in the document window has been adapted to include the new options provided by this Mirage version.

In one look you can see which application/plug-in has transferred images or documents to Mirage.

The image on the left provides a structured view of the files from different applications (Photoshop Documents, Illustrator Artboards, and pages from InDesign).

7) New Color Management Functions



Sometimes files without color management (missing ICC profile) have to be opened. Mirage 3.0 displays a message indicating this problem when a file of this type is opened and provides the option of assigning an ICC profile to the file when it is opened. A color-true printout is then possible based on the assigned profile.

For example, if you open an RGB file (such as a photo from a digital camera or scanner) and the menu on the left appears, reliable color reproduction is not possible if you do not know the original color space of the source file. Usually in this case, the best compromise is to assign the “sRGB” profile.

What do the individual settings mean?

Do not open

Select this option if you do not wish to open the file in question.

Leave as is

The file is opened despite the missing profile without any further messages. When this function is used, the file can only be displayed and printed in profile creation print mode. This would be ideal, for example, for opening a measurement chart to create an ICC profile, which of course has to be printed without assigning a profile.

Assign standard profile(s)

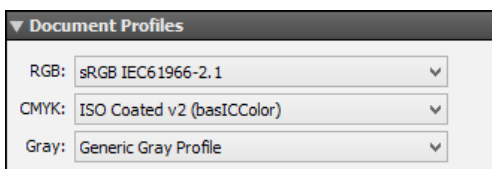
The **Document Profiles** stored in the menu under “**Settings...**” > “**Color Settings**” are applied (see below).

Assign profile(s):

Select this option to choose an existing ICC on the operating system.

NOTE: Changing the profiles will result in color shifts.

NOTE: For optimal assessment of colors, all additional descriptions in this chapter assume that the monitor is calibrated and there are individually created ICC color profiles for the printer and the media type in use.

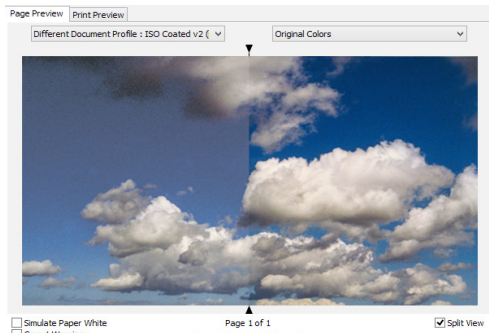


Once you have assigned an ICC profile to a file in the above menu, this assignment can be changed later in the “**Document Profiles**” settings of the Mirage main window.

All of the required settings in the new “**Document Profiles**” settings group of the Mirage main window can be found there.

NOTE: If changes are made here, the printouts may deviate in color from the original.

Mirage also provides the option, of course, of using this function to check the color-related “soft proof” for the print preview.

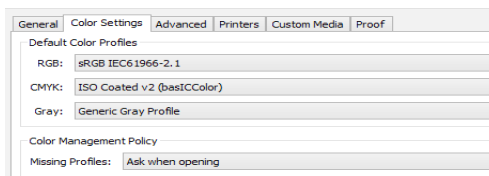


So what should you do if you need to print a file and you do not know the original color space of the source file? Mirage provides a function in this case that helps you make the optimal selection when assigning a new color profile. Once the file is opened, switch to the Mirage “**Page Preview**” and select the “**Split View**” selection field at the bottom left.

Above the file preview, there is a selection menu for each side (right and left halves) of the file, where a different simulation profile can be chosen (for example, “sRGB” for the right and “Adobe RGB 1998” for the left).

Immediately above and below the file preview, there are “handles” which can be used to expand the central splitting of the file to the right or left.

Basic Settings



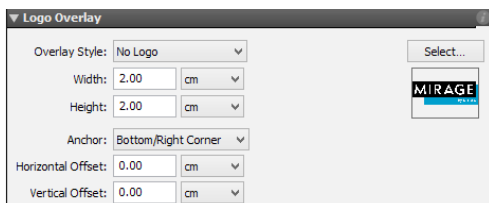
As previously mentioned, Mirage asks how files without color management should be handled when an attempt is made to open them. The basic settings for the menu displayed there can, of course, be personalized at any time in the “**Settings...**” menu under the “**Color Settings**” tab. You can store one basic ICC profile for each of the different RGB and CMYK color spaces.

Ask when opening

When a file with deviating ICC profiles is opened, the settings in the selection menu can be used to define how the program proceeds.

Our tip: We recommend selecting “**Ask when opening**” as a default in order to receive notice when corrections may be necessary.

8) Insert (Overlay) Logo



You can now add your logo to the files to be printed. The “**Logo Overlay**” function saves the time and effort of manually adding a logo to each image in a third-party image processing program.

The new “**Logo Overlay**” menu item on the left side of the Mirage main window can be used to select the logo and view the logo placement options.

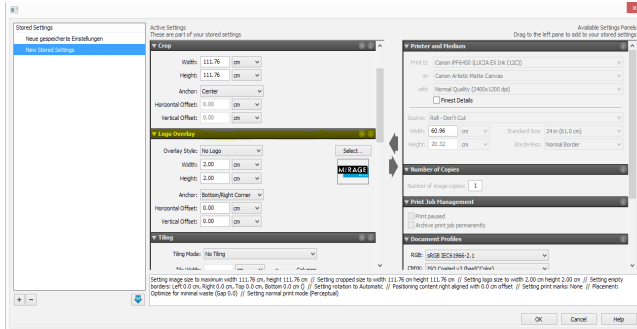
Once a logo file in **RGB or RGBA TIFF format** has been selected, you can personalize the logo display on the printout. A value of 10% to 100% opacity in 5 levels can be selected. The placement of the logo is determined using the anchor and you can also define the distance to the file’s print margin if desired.

Of course, you can also overlay the logo on more than one file, or have more than one instance of the logo in one file. To do this, first select the desired files/instances and then define the settings for the logo overlay style.

The original file is not changed, of course, when a logo is incorporated into the printed file.

Our tip:

Do not use large files for the logo (exceeding 20 MB), as otherwise computer performance may be affected.



Mirage provides the option of automating **logo insertion** (under **Stored Settings**) or controlling logo insertion using a **droplet**.

The settings for droplets or for stored settings can be accessed via the gearwheel symbol in the Mirage main window.

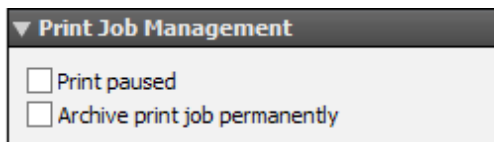
More information on setting up droplets and on stored settings can be found in the manual.

9) Additional Menu Item “Print Job Management”

Mirage has long provided the option to delay print jobs. This is ideal for when changes still have to be made on the printer, for example, before the print job can actually start, such as placing the correct media type in the printer.

If more than one user has access to one printer, jobs from one user can be prioritized by delaying jobs from other users.

In the case of multiple requests to automate this function via **droplets** or **Stored Settings**, this setting can now be defined directly in the Mirage main window:



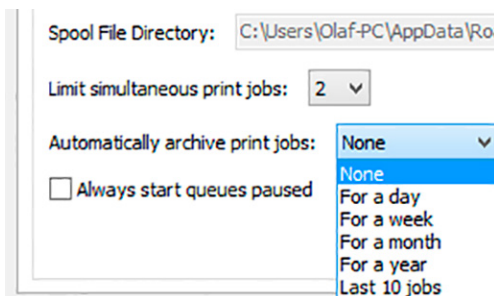
If you have a “**Mirage Job Archive**” license, you can go to the “**Print Job Management**” menu in the Mirage main window and define for each job whether the print job is permanently archived by activating the “**Archive print job permanently**” selection field.

10) Add-on: Mirage Job Archive

NOTE: The Mirage Job Archive is only available if you have a valid license for this add-on.

The new Mirage **Job Archive** is a powerful tool. You can archive print jobs and print these again as necessary without any changes, without having to reopen the data contained in the print job.

The menu for the Mirage **Job Archive** can be found in the Mirage “**Settings...**” under the “**General**” tab.



The basic archiving strategies are defined here and you can set whether jobs are removed after a certain time period or whether archiving is limited to a certain number of print jobs.

Time limit:

Choose between one day, one week, one month, or one year.

Number of jobs:

Choose between the last 10, 25, 50, or 100 print jobs.

If you wish to archive the current print job permanently, go to the “**Print Job Management**” menu in the Mirage main window and select the “**Archive print job permanently**” function.

NOTE:

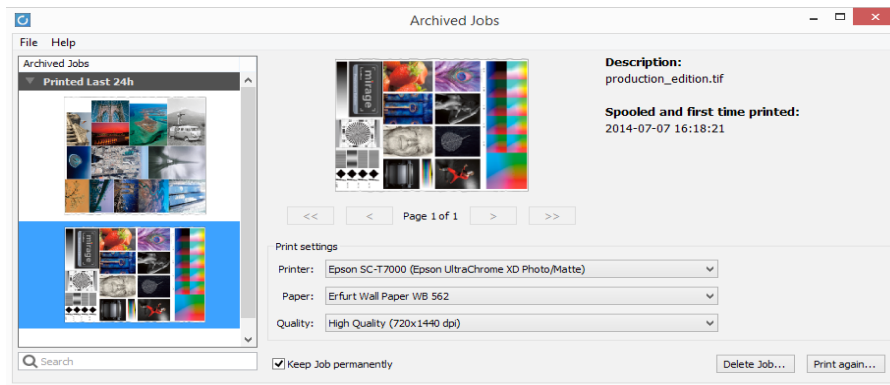
Depending on the size and number of stored jobs, a corresponding amount of free memory space will be required. Ensure that your hard drive has sufficient memory.



The “**Mirage Job Archive**” is an additional program, of course, rather than just a set of additional settings. On Windows computers, a shortcut to the program is placed on the Desktop for quick access; on Macs the shortcut is located in the “Programs” folder.

Start the “**Mirage Job Archive**” program by double-clicking the icon.

The program window of the job archive is divided into two parts. Successfully completed print jobs are shown on the left. The jobs are sorted by date, with the most recently added jobs at the top.



Click a print file in the left column to view detailed information about the print job in the right column.

Type of the **printer** used, **paper**: Originally selected media type and selected **quality** level.

The following parameters can be changed in the “**Print settings**” dialog of the Mirage Job Archive:

Printer:

Only the same or a similarly designed printer can be selected to print an archived job.

Paper Type:

If the media type used for the reprint is different from the original media type, this selection can be made here.

NOTE:

Selecting a different media type may result in color shifts compared to the first printout. There is no option of assessing the colors on the monitor before printing because the print job starts immediately after “**Print again...**” is clicked.

Our tip: To achieve reprints with the same colors as the original printout, you should regularly create current ICC color profiles for the media type in use.

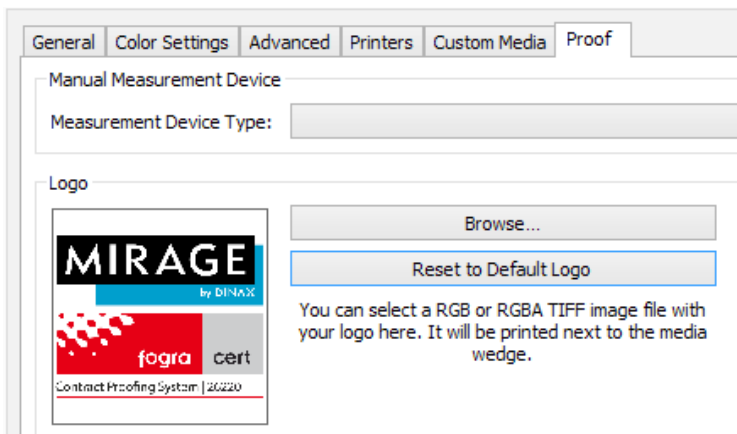
Quality:

A print resolution that is different from the original print job can be selected for the reprint.

11) PROOF-Extension: Personalized Logo in Media Wedge

NOTE: The Mirage PROOF-Extension is an optional additional module that is only available if you have a valid license for this extension.

Alternatively to the preset standard proof logo, the new Mirage Version provides the option of printing a personalized logo next to the media wedge. The settings required for this can be found in the “**Settings...**” menu under the “**Proof**” tab.



An **RGB** or **RGBA TIFF** file can be selected as a logo file.

Our tips:

The logo should be as square as possible for optimal use of the fixed logo display.

Do not use large files for the logo (exceeding 20 MB), as otherwise computer performance may be affected.

12) Mirage Production Edition: New Menu Item “Ink Density Adjustment”

Note:

These settings are only available for Epson Solvent printers from SureColor series SC-30xxx, 50xxx, and 70xxx.

With **Mirage Production Edition 3.0**, it is now also possible to adjust the ink density for each print job and each print color individually without having to switch to the advanced settings of the media presets.

Note:

The changes made in this quick setting are not saved permanently. When the Mirage print dialog is closed and then reopened, the preset values given in the “**Settings...**” menu under the “**Custom Media**” tab > **Your Medium** > “**Advanced Settings**” are used again.

13) Summary

More information on Mirage 3.x and inexpensive updates to this version can be found on our website: www.dinax.com

Important note: If you still use a Mirage Version older than 2.0, please note that updates to the new version 3.x will only be available until August 31, 2014. Support for these older versions will end on December 31, 2014.

Copyright information:

The Mirage software is the property of: DINAX GmbH

The text and screenshots in these instructions may not be copied, published, or used in any other way without previous written permission from DINAX GmbH.

Adobe, Adobe InDesign, Adobe Illustrator & Adobe Photoshop are registered trademarks of Adobe Systems Incorporated in the USA.

Epson & Epson Stylus are registered trademarks of Seiko Epson Corporation, Japan.

Canon and iPF are registered trademarks of Canon Inc., Japan.